

Hastings Landcare Inc.

Strategic Plan

2018-2022

Building community
Enhancing the environment
Supporting sustainable agriculture



Hastings
Landcare
Inc.

OUR MISSION STATEMENT

Harness a thriving, resilient Landcare and wider community dedicated to enhancing our local environment through work on public and private land improving biodiversity, water & air quality, sustainable farming practices, environmental awareness and a reduction in waste.

About Hastings Landcare

Hastings Landcare is a not-for-profit organisation operating in the Port Macquarie-Hastings Local Government Area on the Mid North Coast of NSW. We cover from the Maria River in the north to the Camden Haven River in the south, from the Pacific Ocean to the east to Mt Seaview to the west. Catchments areas include the Maria, Hastings, Wilson, Pappinbarra, Thone, Ellenborough and Camden Haven. We stretch to the plateau landscapes of Comboyne and Elands and the coastal corridor from Northside at Port Macquarie through to Crowdy Bay National Park.

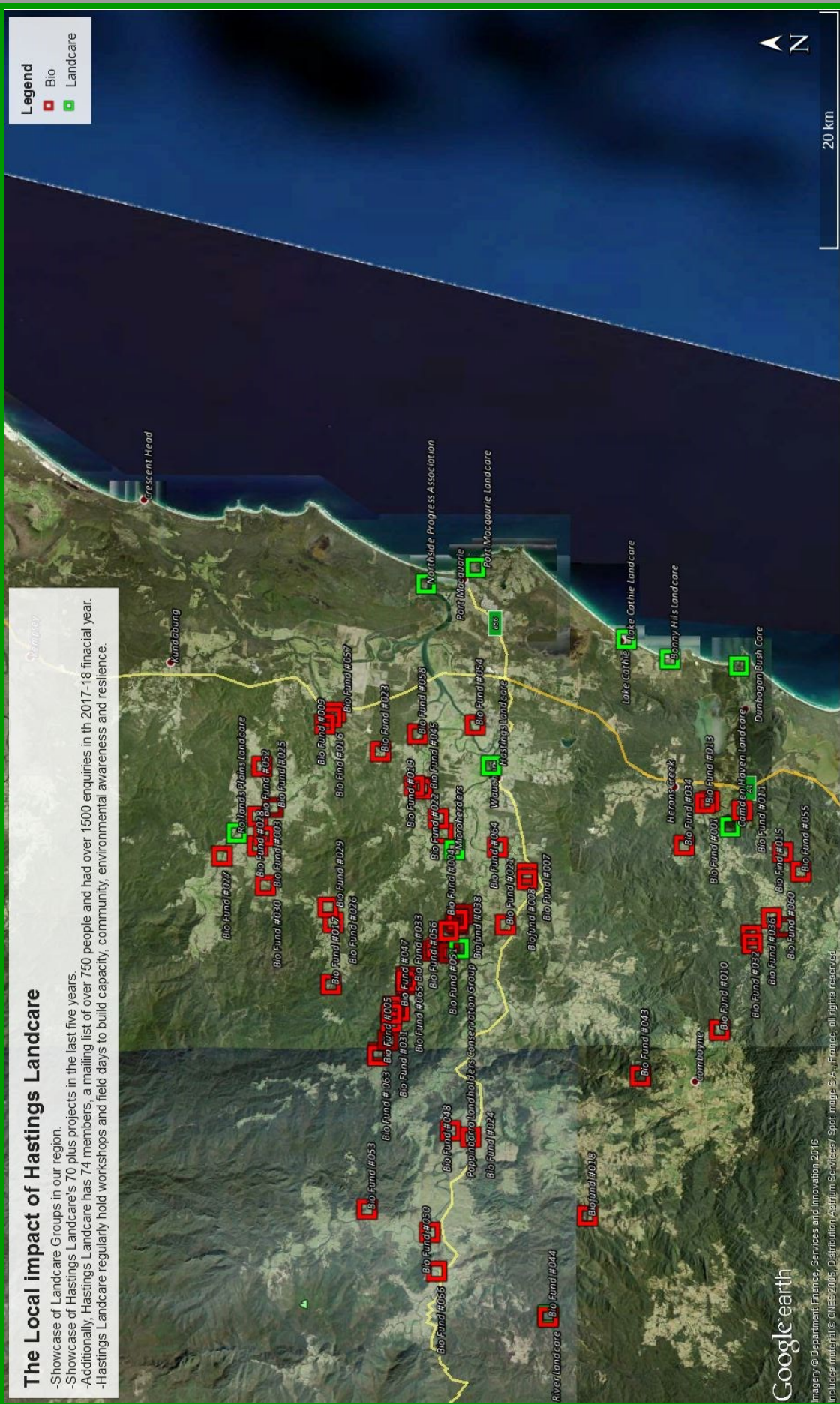
Hastings Landcare Inc. was formed in 1995 and is a community owned and driven volunteer organisation that supports people caring for the environment, farmland and natural resources of our local region. The group is made up of individual Hastings Landcare members and is run by a volunteer management committee which is elected each year at the annual general meeting. Hastings Landcare both supports and gains support from other Landcare groups making a difference in our region. Hastings Landcare is a member of the North Coast Regional Landcare Network and Landcare NSW.

Funding for the organisation is mostly on a competitive basis via project grant applications and contract tenders through regional, state and commonwealth government grant rounds and philanthropic trusts. Staffs are employed on a project/program basis.



The Local impact of Hastings Landcare

- Showcase of Landcare Groups in our region.
- Showcase of Hastings Landcare's 70 plus projects in the last five years.
- Additionally, Hastings Landcare has 74 members, a mailing list of over 750 people and had over 1500 enquiries in the 2017-18 financial year.
- Hastings Landcare regularly hold workshops and field days to build capacity, community, environmental awareness and resilience.



Google earth
 Imagery © Department, Finance, Services and Innovation, 2016
 Includes material © 2015-2016, Distribution Asifurum Services / Spot Image S.A., France, all rights reserved.

Our Objectives

- 1. Operate professionally**
- 2. Provide support for our members**
- 3. Provide support for other Landcare groups in our region**
- 4. Gain Support from the wider community by promoting community involvement, healthy natural environments and sustainable agriculture**
- 5. Increase awareness and knowledge/education in Natural Resource Management (NRM)**
- 6. Engage the younger generations in Landcare activities and events**
- 7. Partner and collaborate with Aboriginal Communities**
- 8. Deliver worthwhile, successful environmental/community projects that have longevity into the future**
- 9. Maintain and create new cohesive partnerships with other organisations**
- 10. Achieve financial security**



WORKING TOWARD THIS OBJECTIVE BY:

1.1 Promoting a safe equal work environment for staff and volunteers

1.2 Providing clear job descriptions for staff employed and annual work appraisals

1.3 Providing appropriate training/ education for the skills needed to undertake the required work

1.4 Obtaining relevant technical/ safety equipment to undertake work

1.5 Striving for continued good organisational governance and governing documents

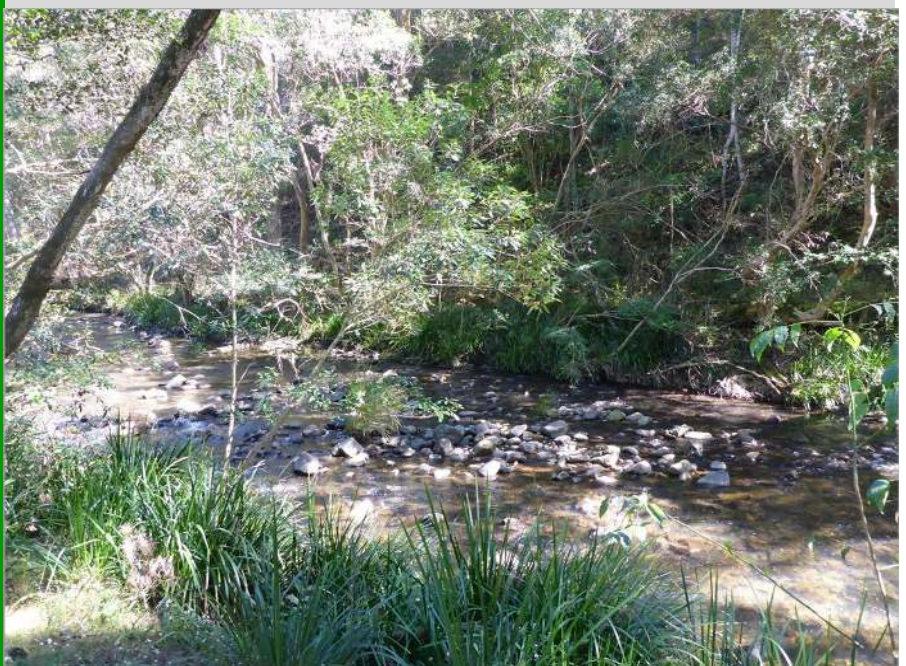
1.6 Having a high standard of Workplace Health and Safety governance and practices

1.7 Promoting achievements in an annual report

1. Operate Professionally

ACTIONS/OUTPUTS ACHIEVED

- ◆ Number of staff employed
- ◆ Number of staff training events undertaken
- ◆ Number of staff reports presented at committee meetings
- ◆ Governance documents such as strategic plan, code of conduct, capability statement and annual report in place



WORKING TOWARD THIS OBJECTIVE BY:

- 2.1 Maintaining the Hastings Landcare network structure and membership
- 2.2 Providing opportunities to volunteer
- 2.3 Keeping communications open for support and discussion
- 2.4 Providing NRM/community information through face to face, telephone, email, newsletter, website and Facebook interactions.
- 2.5 Delivering a regular HATCH e-Newsletter
- 2.6 Maintaining and updating the Hastings Landcare website regularly
- 2.7 Providing Landcare workshops, information session and events
- 2.8 Providing access to hire equipment (fees may apply)
- 2.9 Providing private property site inspections to offer different management options.
- 2.10 Help with grant applications (members only, at Hastings Landcare's discretion)
- 2.11 Assistance with identifying plants and weeds (plus weed control techniques)
- 2.12 Providing access to our network and other Landcare Groups to put members in touch with someone that can help out with knowledge, ideas and expertise.



2. Provide support for our members

ACTIONS/OUTPUTS

- ◆ Number of Hastings Landcare Inc Members
- ◆ Number of committee meetings
- ◆ Number of working bees and planting events
- ◆ Number of enquiries; office, telephone and email.
- ◆ Number of newsletters produced
- ◆ Number of workshops, information sessions and events
- ◆ Number of people hiring equipment

WORKING TOWARD THIS OBJECTIVE BY:

3.1 Promoting other Landcare groups through our newsletter, office, website and Facebook.

3.2 Providing information and support when necessary

3.3 Collaborating and partnering up in mutually beneficial projects, events and field days

3.4 Providing Landcare presentations when required

3.5 Helping with and auspice project grant applications



3. Provide support for other Landcare groups in our region

ACTIONS/OUTPUTS ACHIEVED

- ◆ Number of group features in the Hatch Newsletter
- ◆ Number of collaborative projects, events or field days.





4. Gain Support from the Wider Community by Promoting Awareness about Community Involvement, Healthy Natural Environments and Sustainable Agriculture

WORKING TOWARD THIS OBJECTIVE BY:

- 4.1 Subscribing people to Hastings Landcare Mailing list
- 4.2 Building followers of our Hastings Landcare Facebook page
- 4.3 Inviting the community to events, workshops, etc
- 4.4 Regularly publishing stories and articles in the newspapers.
- 4.5 Encouraging people to enter our office by creating a welcoming, ambient environment.



ACTIONS/OUTPUTS ACHIEVED

- ◆ Number of people subscribed to Hastings Landcare Mailing List
- ◆ Number of followers on Facebook
- ◆ Number of events open for community members
- ◆ Number of media releases
- ◆ Number of Number of enquiries; Office, Telephone and email.





5. Increase knowledge/education in Natural Resource Management (NRM)

ACTIONS/OUTPUTS ACHIEVED

- ◆ Number of presentations provided
- ◆ Number of workshops, field days and events provided
- ◆ Number of informative article releases to media and community newsletters
- ◆ Number of radio presentations

WORKING TOWARD THIS OBJECTIVE BY:

5.1 Providing informative presentations to other Landcare groups, community groups, organisations, schools

5.2 Providing workshop , field days and events

5.3 Providing informative articles in the local newspapers and community newsletters.

5.4 Providing informative radio presentations



WORKING TOWARD THIS OBJECTIVE BY:

6.1 Provide presentations for schools or Tafe

6.2 Collaborate or partner with schools or Tafe

6.3 Facilitate planting/working bees with schools or Tafe

6.4 Develop publications for school or Tafe

WORKING TOWARD THIS OBJECTIVE BY:

7.1 Develop links to the pursuits of Landcare and that of Aboriginal Communities

7.2 Collaborate and partner with Aboriginal Communities on projects and events

7.3 Request information, presentations and knowledge input from Aboriginal Communities

7.4 Provide Landcare presentations for Aboriginal Communities

6. Engage younger generation in Landcare activities and events

ACTIONS/OUTPUTS ACHIEVED

- ◆ Number of presentations and/or planting/working bees provided for schools or Tafe
- ◆ Number of collaborations with schools or Tafe



7. Support Aboriginal Communities

ACTIONS/OUTPUTS ACHIEVED

- Number of project and event collaborations
- ◆ Number of Aboriginal presenters at events



8. Deliver worthwhile, successful environmental/community projects that have longevity into the future

WORKING TOWARD THIS OBJECTIVE BY:

8.1 Drafting up worthwhile local projects ready to apply for funding

8.2 Helping members to apply for funding for projects on private land

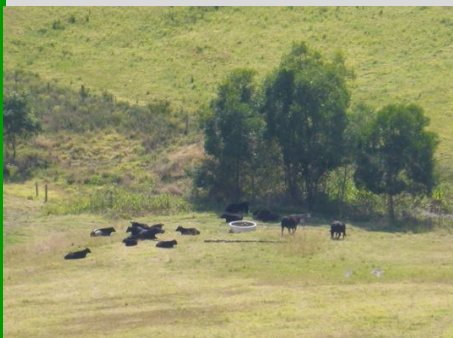
8.3 Determining community needs and devising a way or a landcare project that may fulfil that need.

8.4 Show casing our projects to the wider community through case studies, newsletters, website, radio, Facebook and the media.

8.5 Showcasing follow up stories from past projects.

ACTIONS/OUTPUTS ACHIEVED

- ◆ Grant processes in place
- ◆ Number of funding ready projects
- ◆ Number of case studies on Hastings Landcare Website





9. Maintain and create new cohesive partnerships with other organisations

ACTIONS/OUTPUTS ACHIEVED

- ◆ Number of existing & new partnerships with local organisation
- ◆ Number of collaborative projects and events

WORKING TOWARD THIS OBJECTIVE BY:

- 9.1 Supporting partnering organisations whenever possible
- 9.2 Maintaining effective communications with partnering organisations
- 9.3 Identifying new partnerships that Hastings Landcare would like to form
- 9.4 Approaching potential organisations to begin a mutually beneficial partnership and determine where collaborations could be possible





WORKING TOWARD THIS OBJECTIVE BY:

10.1 Increasing Hastings Landcare Membership

10.2 Increasing Hastings Landcare donations

10.3 Applying for regional, state and federal government and philanthropic grants

10.4 Exploring potential income from local government-Port Macquarie Hastings Council

10.5 Explore addition income streams to that of government funding



10. Achieve financial security

ACTIONS/OUTPUTS ACHIEVED

- ◆ Number of new members
- ◆ Amount donated
- ◆ Number of grant applications submitted and number successful applications
- ◆ Continual review of strategic plan and Hastings Landcare growth via monthly reviews



Join Hastings Landcare !

APPLICATION for INDIVIDUAL/FAMILY MEMBERSHIP

I.....(full name),

of.....

..... (address),

hereby **apply for** membership of Hastings Landcare Incorporated.

hereby **renew** my membership of Hastings Landcare Incorporated.

My Contact Details:

Ph Mobile

Email

I would like to receive our HATCH NEWSLETTER via email

I declare that I will abide by the rules set out in the Constitution of Hastings Landcare Incorporated.

Signed Date

ANNUAL MEMBERSHIP FEE - \$15 (per Financial Year July- June) DUE 1st JULY

or

3 YEARS MEMBERSHIP - \$40

Or

5 YEAR MEMBERSHIP - \$60

Please deposit membership fee directly into Hastings Landcare account, Holiday Coast Credit Union:

BSB: 721 000; Account: 51254; Reference: your name

Or drop into our office and join!

Please return to office@hastingslandcare.org.au or drop into the office at 44A Cameron Street, Wauchope.



Hastings Landcare Inc. Strategic Plan 2018-2022



Hastings
Landcare
Inc.



Find us on
Facebook

Hastings Landcare Inc.

PO Box 126

44a Cameron Street

Wauchope NSW 2446

Ph. 02 6586 4465

office@hastingslandcare.org.au

www.hastingslandcare.org.au

